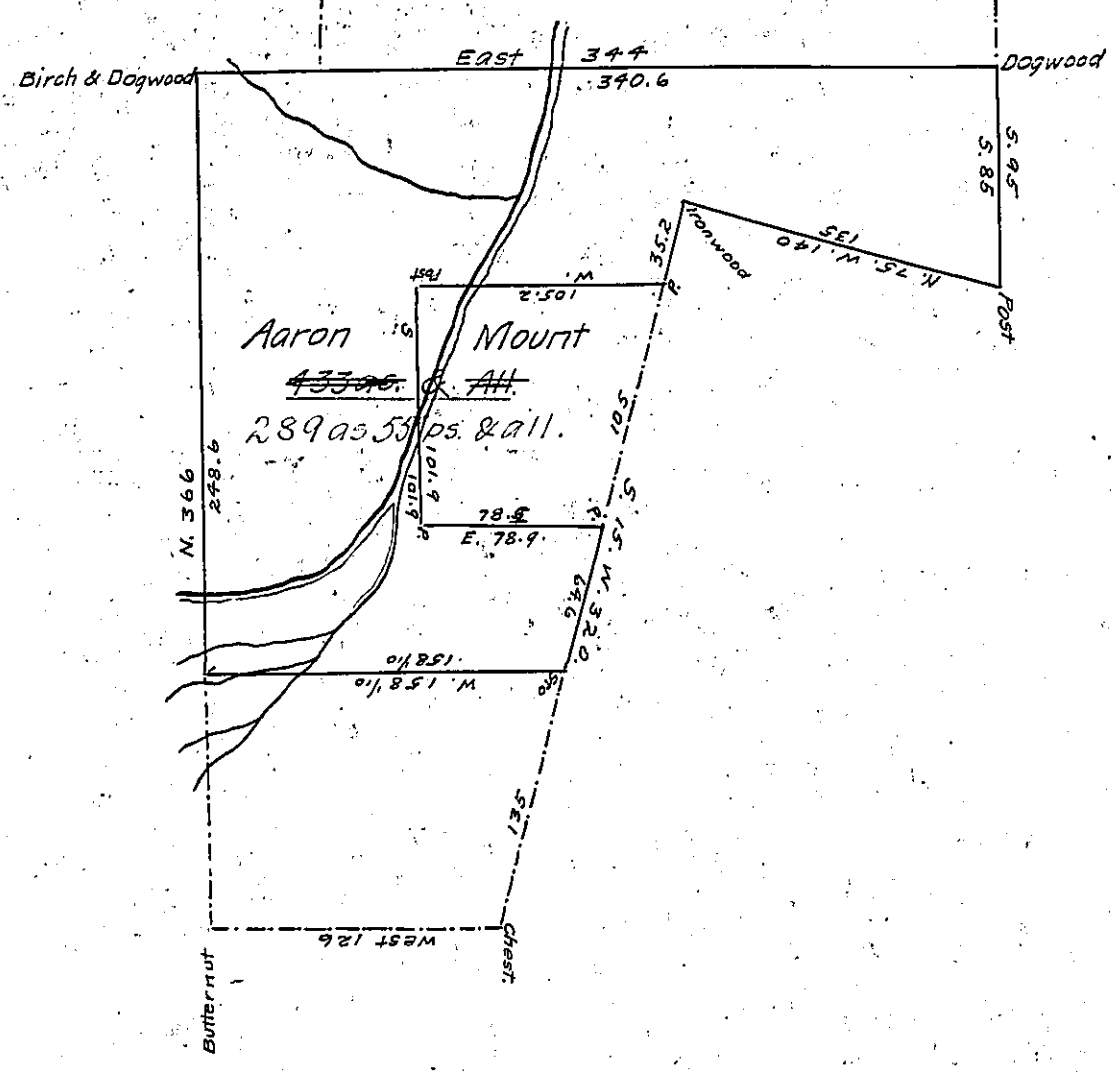


FORM NO. 1.

Daniel Mount  
now  
John J. Shonk



A Draft of a tract of land situated in the Township of Lake and County of Luzerne, containing 289 acres 55 perches and allowance of six per cent. for roads, etc. Surveyed for John J. Shonk the 22nd day of November 1899 it being part of a larger tract containing 433 acres, — perches and allowance, originally surveyed in pursuance of a warrant granted to Aaron Mount dated the twenty eighth day of August 1792.

H. B. Rutter

To James W. Latta, Esq.,  
Secretary of Internal Affairs

County Surveyor

IN TESTIMONY that the above is a copy of the original remaining on file in the Department of Internal Affairs of Pennsylvania, made conformably to an Act of Assembly approved the 16th day of February, 1833, I have hereunto set my Hand and caused the Seal of said Department to be affixed at Harrisburg, this eighteenth day of April 1906

*Isaac B. Pearson*  
Secretary of Internal Affairs.